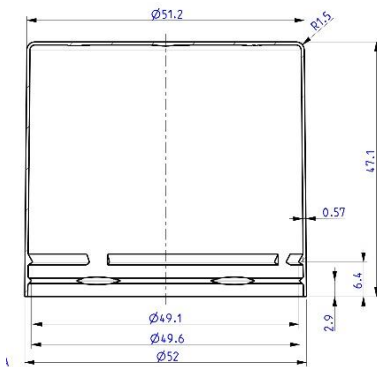


Type NI65.00/01



CAN BE USED FOR

chemical industry

ADVANTAGEOUS FEATURES

CAPS and adapres for PU-foam

neck-in cap

additional glowes possible

decarate your cap

AVAILABLE

in different colour With or

without glowes

TECHNICAL SPECIFICATION

Type of cap	Necked in cap
Fitting to	tinplate cans
Producer ID	PR1000 and other
Producer ean code (depend on colour)	TBA
Raw material	PP
Type of carton	pap (3 layer)
Quantity per cardboard box [pcs] (outer box demensions 79,0 x 39,8 x 383 cm)	400 pcs/box
Quantity per pallet (pallet dimension 1200 x 800 x 144 mm)	18 boxes (6 row) 7200 pcs/pall
pallet height [mm]	approx. 2450cm
Label packaging	1 label on box 100*120mm (white) On the label will be all data known before the order conformation. All other data will be extra charge.

Packaging is standard. Other packaging tipes, will be charged extra.

All extra demans must be known before the order conformation.

*deviation on weight is always possible (different material, batch, etc)

Storage Before use plastic Items in production, keep them at least 24 hours indoor by 18-20°C.

It is strictly forbidden to storage pallet on pallet.

Foodsafe If you wish to have food safe certificate for our products, contact us and we will prepare i exact for your order.

For colour variation contact office.slovenia@sopi-closures.com

All products are in tolerance according to DIN 16742 or otherwise agreed